

Photographs taken by the BATFE the next day

24 hours later, the **Bureau of Alcohol, Tobacco Firearms, and Explosives** came to the scene to take their own photographs, but used the same or very similar camera as used by the local Police.



Photographs taken by the BATFE the next day

It is apparent that they realized that the **hole** does **not look fresh** or **big** enough. It is very clear in the photographs they tried to **freshen** it up and make it **bigger** to fit the story they had created.



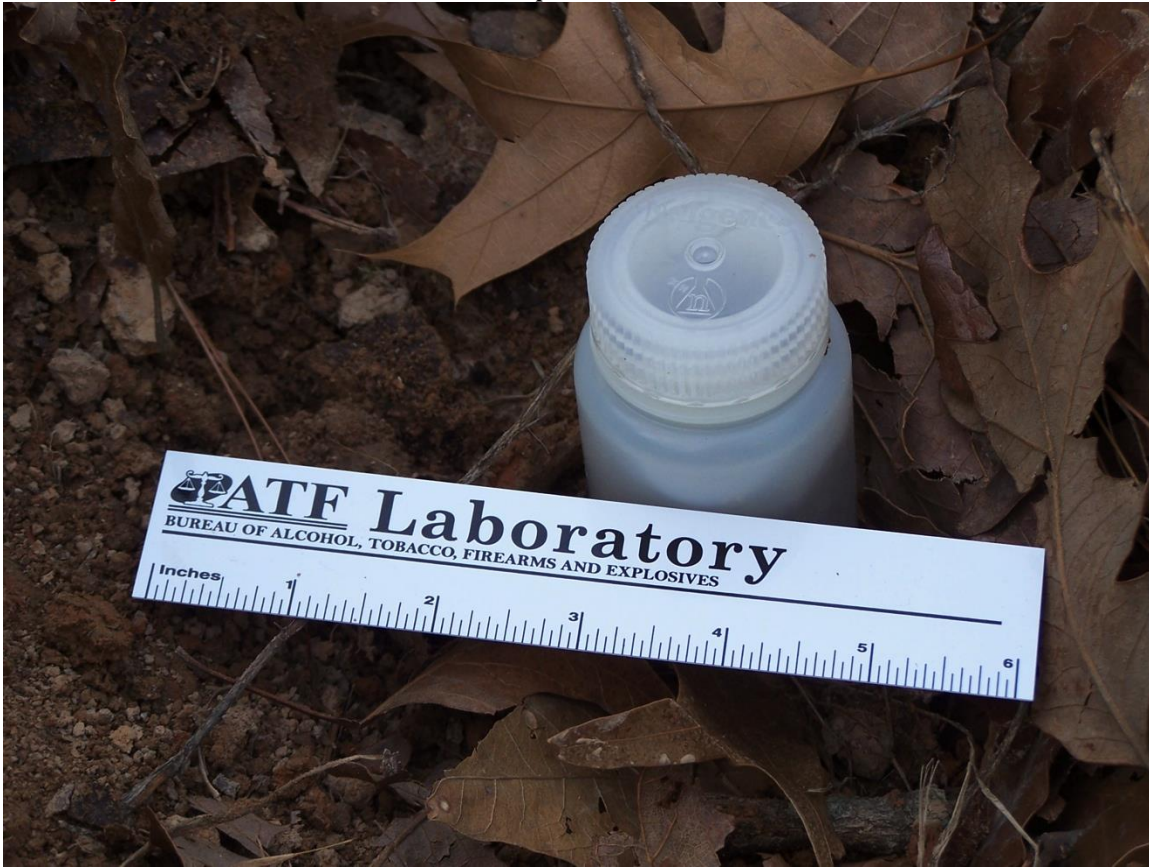
Photographs taken by the BATFE the next day

The agents, tried to give **credibility** to their evidence by placing a **small ATF scale** and other objects to show the **size** and **dimensions** of the **hole**. It actually **proves it otherwise**.



Photographs taken by the BATFE the next day

The **hole** is so small that at times it is **impossible** to even distinguish where it is. We leave it for you, or even a **10-year-old child** to decide if it is possible for an **ammunition box** to **fit inside** it.



Photographs taken by the BATFE the next day

Again, it is emphasized that **no DNA** or **fingerprints** of the **people who discovered** the box or that of **Randeep Mann** were found on either the **grenades** or the **box** although it was handled by them.



Photographs taken by the BATFE the next day

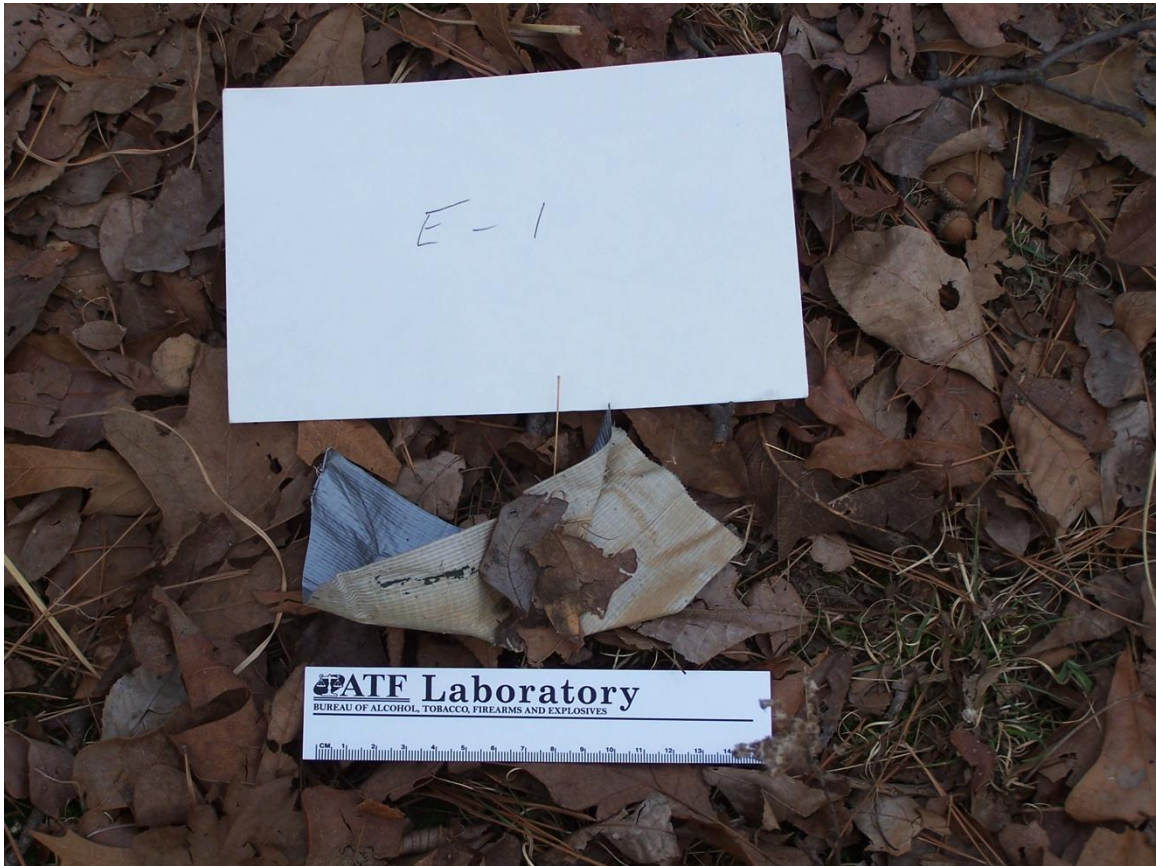
This location is about **300 yards** from **Randeep Mann's house**. People were made to believe as if these items were discovered in his backyard and belonged to him.



Photographs taken by the BATFE the next day



Photographs taken by the BATFE the next day



Photographs taken by the BATFE the next day



Photographs taken by the BATFE the next day



Photographs taken by the BATFE the next day

